

## RED CELLS, IRON, AND ERYTHROPOIESIS

Decreasing TfR1 expression reverses anemia and hepcidin suppression in  $\beta$ -thalassemic mice

Huihui Li,<sup>1,2</sup> Tenzin Choesang,<sup>3</sup> Weili Bao,<sup>3</sup> Huiyong Chen,<sup>3,4</sup> Maria Feola,<sup>2,5</sup> Daniel Garcia-Santos,<sup>6</sup> Jie Li,<sup>7</sup> Shuming Sun,<sup>3,4</sup> Antonia Follenzi,<sup>5</sup> Petra Pham,<sup>8</sup> Jing Liu,<sup>4,7</sup> Jinghua Zhang,<sup>7</sup> Prem Ponka,<sup>6</sup> Xiuli An,<sup>7</sup> Narla Mohandas,<sup>7</sup> Robert E. Fleming,<sup>9</sup> Stefano Rivella,<sup>10</sup> Guiyuan Li,<sup>1</sup> and Yelena Z. Ginzburg<sup>1,2</sup>

<sup>1</sup>Hunan Key Laboratory of Carcinogenesis and Cancer Invasion, Cancer Research Institute, Central South University, Ministry of Education, Changsha, China; <sup>2</sup>Division of Hematology and Medical Oncology, Icahn School of Medicine at Mount Sinai, New York, NY; <sup>3</sup>Erythropoiesis Laboratory, New York Blood Center, New York, NY; <sup>4</sup>State Key Laboratory of Medical Genetics and School of Life Sciences, Central South University, Changsha, China; <sup>5</sup>University of Piemonte Orientale, Amedeo Avogadro, Novara, Italy; <sup>6</sup>Jewish General Hospital, Lady Davis Institute, McGill University, Montreal, QC, Canada; <sup>7</sup>Laboratory of Membrane Biology, New York Blood Center, New York, NY; <sup>8</sup>Flow Cytometry Core Laboratory, Lindsley F. Kimball Research Institute, New York Blood Center, New York, NY; <sup>9</sup>Saint Louis University, Saint Louis, MO; and <sup>10</sup>Children's Hospital of Philadelphia, Philadelphia, PA

## Key Points

- Apotransferrin decreases TfR1 expression and alters TfR1 trafficking to normalize enucleation in  $\beta$ -thalassemic erythroid precursors.
- Decreased TfR1 upregulates hepcidin in an iron- and ERFE-independent manner, resulting in iron-restricted  $\beta$ -thalassemic erythropoiesis.

Iron availability for erythropoiesis and its dysregulation in  $\beta$ -thalassemia are incompletely understood. We previously demonstrated that exogenous apotransferrin leads to more effective erythropoiesis, decreasing erythroferrone (ERFE) and derepressing hepcidin in  $\beta$ -thalassemic mice. Transferrin-bound iron binding to transferrin receptor 1 (TfR1) is essential for cellular iron delivery during erythropoiesis. We hypothesize that apotransferrin's effect is mediated via decreased TfR1 expression and evaluate TfR1 expression in  $\beta$ -thalassemic mice in vivo and in vitro with and without added apotransferrin. Our findings demonstrate that  $\beta$ -thalassemic erythroid precursors overexpress TfR1, an effect that can be reversed by the administration of exogenous apotransferrin. In vitro experiments demonstrate that apotransferrin inhibits TfR1 expression independent of erythropoietin- and iron-related signaling, decreases TfR1 partitioning to reticulocytes during enucleation, and enhances enucleation of defective  $\beta$ -thalassemic erythroid precursors. These findings strongly suggest that overexpressed TfR1 may play a regulatory role contributing to iron overload and anemia in  $\beta$ -thalassemic

mice. To evaluate further, we crossed TfR1<sup>+/-</sup> mice, themselves exhibiting iron-restricted erythropoiesis with increased hepcidin, with  $\beta$ -thalassemic mice. Resultant double-heterozygote mice demonstrate long-term improvement in ineffective erythropoiesis, hepcidin derepression, and increased erythroid enucleation in relation to  $\beta$ -thalassemic mice. Our data demonstrate for the first time that TfR1<sup>+/-</sup> haploinsufficiency reverses iron overload specifically in  $\beta$ -thalassemic erythroid precursors. Taken together, decreasing TfR1 expression during  $\beta$ -thalassemic erythropoiesis, either directly via induced haploinsufficiency or via exogenous apotransferrin, decreases ineffective erythropoiesis and provides an endogenous mechanism to upregulate hepcidin, leading to sustained iron-restricted erythropoiesis and preventing systemic iron overload in  $\beta$ -thalassemic mice. (*Blood*. 2017;129(11):1514-1526)

## Introduction

$\beta$ -Thalassemias result from mutations in the  $\beta$ -globin gene, reducing  $\beta$ -globin synthesis<sup>1</sup> and consequently accumulating excess  $\alpha$ -globin chains. This pathology leads to increased erythroid precursor apoptosis, causing ineffective erythropoiesis, extramedullary expansion, and splenomegaly, which together with shortened red blood cell (RBC) survival result in anemia.<sup>2,3</sup> Normal erythropoiesis leads to the generation of RBCs from multipotent stem cells and involves (1) erythropoietin-sensitive proliferation, (2) differentiation from pro- to orthochromatophilic erythroblasts during iron-dependent hemoglobin synthesis, and (3) enucleation with release and maturation of reticulocytes into RBCs. Although the mechanisms involved in enucleation remain elusive, there is general consensus that it is the end result of erythropoiesis, and abnormalities in erythroid differentiation

(eg, ineffective erythropoiesis) are expected to decrease the number of end-terminal erythroblasts available to undergo enucleation.

In addition to ineffective erythropoiesis, patients with moderate or severe  $\beta$ -thalassemia have inappropriately low circulating hepcidin,<sup>4,5</sup> the main negative regulator of body iron flows,<sup>6-8</sup> leading to increased intestinal iron absorption<sup>9</sup> and iron overload. Mouse models of  $\beta$ -thalassemia also exhibit relatively low hepcidin.<sup>10</sup> Lack of appropriately increased hepcidin despite increased parenchymal iron stores suggests that a competing signal is counterregulating hepcidin expression,<sup>11-13</sup> establishing  $\beta$ -thalassemia as an important opportunity for evaluating erythroid regulation of hepcidin.<sup>14</sup> Several factors (eg, growth differentiation factor-15 [GDF-15]) secreted by erythroid precursors<sup>13,15-18</sup> have been implicated as pathological hepcidin

Submitted 26 September 2016; accepted 12 January 2017. Prepublished online as *Blood* First Edition paper, 1 February 2017; DOI 10.1182/blood-2016-09-742387.

The online version of this article contains a data supplement.

The publication costs of this article were defrayed in part by page charge payment. Therefore, and solely to indicate this fact, this article is hereby marked "advertisement" in accordance with 18 USC section 1734.

© 2017 by The American Society of Hematology

**Table 1. RBC parameters in double-heterozygote mice reveal a significant increase in RBC number and hemoglobin with a decrease in reticulocyte count, MCV, MCH, and RDW in comparison with th3/+ mice**

	Hemoglobin (g/dL)	RBCs ( $10^6$ cells/ $\mu$ L)	Reticulocytes ( $10^9$ cells/L)	RDW (%)	MCV (fL)	MCH (pg)
WT	15 $\pm$ 0.7	11 $\pm$ 0.4	313 $\pm$ 20	13 $\pm$ 0.3	43 $\pm$ 1.1	14 $\pm$ 0.2
TfR1 <sup>+/-</sup>	14 $\pm$ 0.3*	13 $\pm$ 0.3**	371 $\pm$ 33*	16 $\pm$ 0.5***	36 $\pm$ 1.1***	11 $\pm$ 0.2***
th3/+	9 $\pm$ 0.2***	10 $\pm$ 0.1*	1958 $\pm$ 128***	36 $\pm$ 0.4***	32 $\pm$ 1.2***	9 $\pm$ 0.1***
Double-het	11 $\pm$ 0.2†††	13 $\pm$ 0.3†††	945 $\pm$ 39†††	24 $\pm$ 0.4†††	29 $\pm$ 0.5†	8 $\pm$ 0.1††

Data represent means  $\pm$  standard errors of the mean; n = 8 mice per group.

Double-het, double-heterozygote mice.

\* $P$  < .05; \*\* $P$  < .01; \*\*\* $P$  < .001 vs WT.

† $P$  < .05; †† $P$  < .01; ††† $P$  < .001 vs th3/+.

regulators in  $\beta$ -thalassemia<sup>19,20</sup> but are likely not physiological hepcidin regulators in light of their expression remaining unchanged after phlebotomy in mice,<sup>21</sup> in iron deficiency,<sup>22,23</sup> in anemia of chronic inflammation,<sup>23</sup> and in myeloproliferative diseases.<sup>24</sup> Recently, erythroferrone was identified as a physiologic erythroid regulator of hepcidin, found to be increased in bone marrow from  $\beta$ -thalassemic and phlebotomized wild-type (WT) mice.<sup>25</sup> Erythroferrone ablation in  $\beta$ -thalassemic mice normalized inappropriately suppressed hepcidin expression.<sup>25</sup> Despite high confidence that erythroferrone regulates hepcidin, phlebotomized *erythroferrone* knockout mice exhibit decreased hepcidin expression<sup>25</sup>; furthermore, despite increased hepcidin expression, anemia persists in *erythroferrone* knockout  $\beta$ -thalassemic mice.<sup>26</sup> We aim to evaluate in greater detail the molecules involved in iron delivery for erythropoiesis and assess additional mechanisms of hepcidin regulation in  $\beta$ -thalassemic mice.

Erythroid precursors obtain iron via the transferrin cycle. Diferric transferrin binds to transferrin receptor 1 (TfR1),<sup>27-29</sup> ultimately recycling apotransferrin (apoTf, transferrin devoid of iron) and TfR1 back to the plasma membrane after iron transport to the cytosol/mitochondria. TfR1 is characteristically expressed on erythroid precursors, progressively decreasing during erythroid differentiation.<sup>30</sup> TfR1 is lost during both enucleation and reticulocyte maturation, the latter a consequence of proteolytic cleavage just external to the transmembrane domain,<sup>31</sup> leading to soluble TfR1 (sTfR1) circulation in plasma.<sup>32</sup> TfR1 expression itself is upregulated in iron deficiency<sup>33,34</sup> and by increased erythropoiesis,<sup>35</sup> but its function in erythropoiesis beyond its canonical involvement in cellular iron uptake is incompletely understood. Prior investigation found no regulatory function of sTfR1 on hepcidin<sup>36</sup>; however, hepcidin expression in TfR1 heterozygous mice (TfR1<sup>+/-</sup>) is increased despite relative iron deficiency, iron-restricted erythropoiesis, and increased *erythroferrone* expression.<sup>37</sup> In light of this paradoxical regulation of hepcidin, we aim to evaluate the effect of decreased TfR1 in regulating ineffective erythropoiesis and iron overload in  $\beta$ -thalassemic mice.

Recent studies investigate mechanisms by which modulating systemic iron influences erythropoiesis. Iron-deficient diet is only partially beneficial in diseases of ineffective erythropoiesis,<sup>38</sup> decreasing liver iron without improving hemoglobin in  $\beta$ -thalassemic mice.<sup>38</sup> Furthermore, iron chelator deferiprone-treated  $\beta$ -thalassemic mice exhibit decreased liver iron with no improvement in erythropoiesis.<sup>39</sup> By contrast, increased hepcidin expression ameliorates ineffective erythropoiesis in  $\beta$ -thalassemic mice,<sup>38-40</sup> while reversing iron overload; however, transmembrane protease, serine 6 (*Tmprss6*<sup>-/-</sup>) mice exhibit very low mean corpuscular volume (MCV), leading to extreme iron-restricted erythropoiesis, and *Tmprss6*<sup>-/-</sup>  $\beta$ -thalassemic mice exhibit increased erythropoietin,<sup>41</sup> suggesting that excessive hepcidin upregulation causes iron restriction<sup>38</sup> and prevents complete reversal of ineffective erythropoiesis. Thus, inducing iron-restricted erythropoiesis by decreasing TfR1 may provide endogenous

mechanisms for increasing hepcidin to maximize benefit for erythropoiesis and iron overload in  $\beta$ -thalassemia.

We previously demonstrated that exogenous apoTf ameliorates ineffective erythropoiesis, reverses anemia, and increases hepcidin expression in *Hbb*<sup>th1/th1</sup> (th1/th1) mice,<sup>42</sup> a model of  $\beta$ -thalassemia intermedia. Furthermore, apoTf-treated th1/th1 mice exhibit more iron-restricted erythropoiesis, decreased transferrin saturation,<sup>42</sup> and less liver iron deposition.<sup>43</sup> Similar findings were evident in *Hbb*<sup>th3/+</sup> (th3/+) mice.<sup>44,45</sup>  $\beta$ -Thalassemic humans<sup>15</sup> and mice<sup>46</sup> exhibit increased sTfR1 concentration; sTfR1 decreased after apoTf treatment in th1/th1 mice,<sup>46</sup> suggesting the possibility that changes in membrane TfR1, proportional to sTfR1, may be either a cause or a consequence of improved erythropoiesis in  $\beta$ -thalassemia. In this report, we confirm the suppressive effect of apoTf on erythroblast TfR1 expression in vivo and in vitro, independent of erythropoietin- and iron-related signaling. Furthermore, we generate double-heterozygote (TfR1<sup>+/-</sup>) crossed with th3/+ mice and demonstrate iron restriction specifically in erythroid precursors, improved erythroid enucleation, and hepcidin derepression in an iron- and erythroferrone-independent manner. These double-heterozygote mice provide compelling evidence that decreased TfR1 expression is central to mitigating defective erythroid enucleation in th3/+ mice. We also demonstrate that hepcidin derepression results in redistribution of iron to macrophages, where iron is less toxic,<sup>47</sup> resulting in relatively iron-restricted erythropoiesis and preventing progressive systemic iron overload. Taken together, our data strongly support our hypothesis that decreased TfR1 reverses ineffective erythropoiesis in  $\beta$ -thalassemic mice.

## Methods

### Mice

C57BL6 (WT) and  $\beta$ -thalassemic (th3/+) <sup>44</sup> mice were originally purchased from Jackson Laboratories. TfR1<sup>+/-</sup> mice<sup>48</sup> were gifted by Nancy Andrews. All mice were backcrossed onto a C57BL6 background for more than 11 generations. All experiments were conducted using 5-month-old gender-matched mice unless otherwise noted. Progeny of TfR1<sup>+/-</sup> crossed with th3/+ mice were generated to analyze characteristics of "double-heterozygote mice." All mice were bred and housed in the animal facility under Association for Assessment and Accreditation of Laboratory Animal Care guidelines. Experimental protocols were approved by the Institutional Animal Care and Use Committee. Mice were treated with 10 mg (400 mg/kg/d) of human apoTf (Kamada, Israel) intraperitoneally daily for 20 days and sacrificed on day 3 after the last injection.<sup>43</sup> Samples were stored at -80°C until further analysis.

Bone marrow samples and isolated bone marrow erythroid precursors were used to analyze the effect of TfR1 haploinsufficiency on erythroblasts. Bone marrow erythroid precursors were collected using CD45 beads (ie, CD45-negative cells). Furthermore, embryonic erythrocytes in circulation and fetal liver cells (FLCs) from embryonic day 18.5 (E18.5) were used as supporting evidence

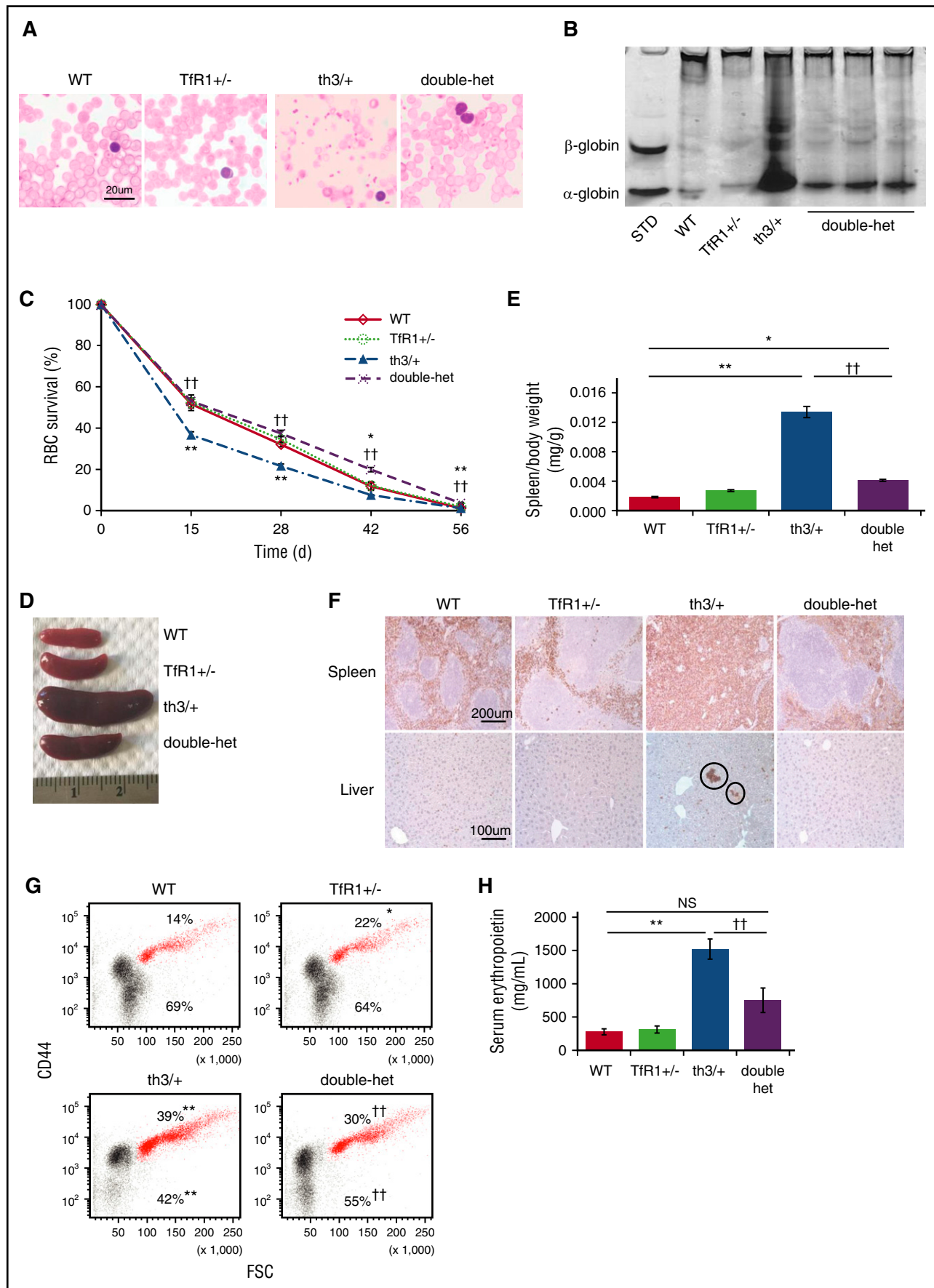


Figure 1.

of differences in enucleation among WT, th3/+, and double-heterozygote mice in vivo.

### Cell culture

FLCs from E12.5 to E14.5 embryos, when the predominant cell type in the liver was erythroid, were isolated using anti-Ter119 beads<sup>49</sup>; these experiments provide additional in vitro support to our in vivo experiments. Hepatocytes were isolated from WT mice using two-step liver perfusion<sup>50</sup> and processed after 24-hour incubation at 37°C in 10% mouse sera.<sup>43</sup>

### Peripheral blood analyses

RBC indices and serum samples were analyzed as previously described.<sup>42</sup> Serum mouse erythropoietin (Quantikine, R&D Systems), transferrin (Abcam), and hepcidin (Hepcidin-Murine Compete<sup>TM</sup>, Intrinsic LifeSciences, LLC, La Jolla, CA) were measured by enzyme-linked immunosorbent assay (ELISA) according to the manufacturer's instructions. The sandwich ELISA using mouse monoclonal antibodies against mouse erythroferrone was performed as previously described<sup>26</sup>; 100 pg/mL was the assay's lower limit of detection. Integra 800 Automated Clinical Analyzer (Roche Diagnostics, Indianapolis, IN) was used for other circulating iron-related parameters; serum transferrin saturation was measured as a ratio of serum iron to transferrin iron-binding capacity. Images were acquired on the Gel Logic 200 Imaging System with Kodak Molecular Imaging software (version 4.0.4).

### Histology and immunohistochemistry

Immunohistochemical staining was performed using anti-TER119 antibodies (eBioscience, San Diego, CA). Images were acquired on a Zeiss Axioskop2 microscope with an AxioCamHRC camera using Plan-Neofluar objectives  $\times 20/0.5$  and Axiovision software.

### Nonheme iron spectrophotometry

Quantification was performed via the Torrance and Bothwell method.<sup>51</sup> The absorption was measured at 540 nm by spectrophotometer (Multiskan MCC Microplate Reader, Fisher Scientific).

### Flow cytometry

Bone marrow and spleen cells were processed as previously described<sup>46,52</sup> with minor modifications. FLCs and peripheral blood circulating cells were incubated with SYTO 60 and TER-119 to evaluate enucleation. Nucleated and enucleated cells were identified using SYTO 60 and forward scatter.<sup>53,54</sup> Results were acquired and cells collected on a MoFlo<sup>®</sup> XDP High-Speed Cell Sorter using Summit Software (Beckman Coulter).

### Western blot analysis

Western blot was performed using phosphor extracellular signal-regulated kinase (pErk), Erk, pSmad1/5/8, Smad1, bone morphogenetic protein 2 (BMP2; Novus Biologicals), glyceraldehyde-3-phosphate dehydrogenase (GAPDH; Invitrogen), TfR1 and  $\beta$ -actin (Invitrogen), and TfR2 (gift from Robert Fleming) primary antibodies followed by secondary antibodies (horseradish peroxidase-conjugated; Thermo Scientific). Immunoreactive bands were visualized by enhanced chemiluminescence (Amersham Bioscience, GE Healthcare Life Sciences).

### Quantitative real-time PCR

RNA was purified from erythroid precursors and hepatocytes using PureLink RNA Mini Kit (Ambion, Life Technology) and analyzed with SuperScript III Platinum SYBR Green One-Step quantitative real-time (qRT) polymerase chain reaction (PCR) Kit (Invitrogen). *BMP2*, *Bmp6*, *TfR1*, *TfR2*, *Hfe*, *hepcidin*, and *erythroferrone* messenger RNA (mRNA) levels were detected.<sup>25,55,56</sup> Primers for *BMP2*, *Bmp6*, *TfR1*, *TfR2*, *Hfe*, *hepcidin*, and *erythroferrone* were designed and confirmed.<sup>25,43</sup> Target gene mRNA concentration was normalized to *GAPDH*.<sup>13,57</sup>

### Statistics

Data are presented as mean  $\pm$  standard error of the mean. When multiple comparisons were needed, statistical analysis was performed using one-way analysis of variance with Tukey and Welch's tests, depending on whether the number of animals was comparable between groups. For comparisons between two groups, we used two-tailed Student paired *t* test.

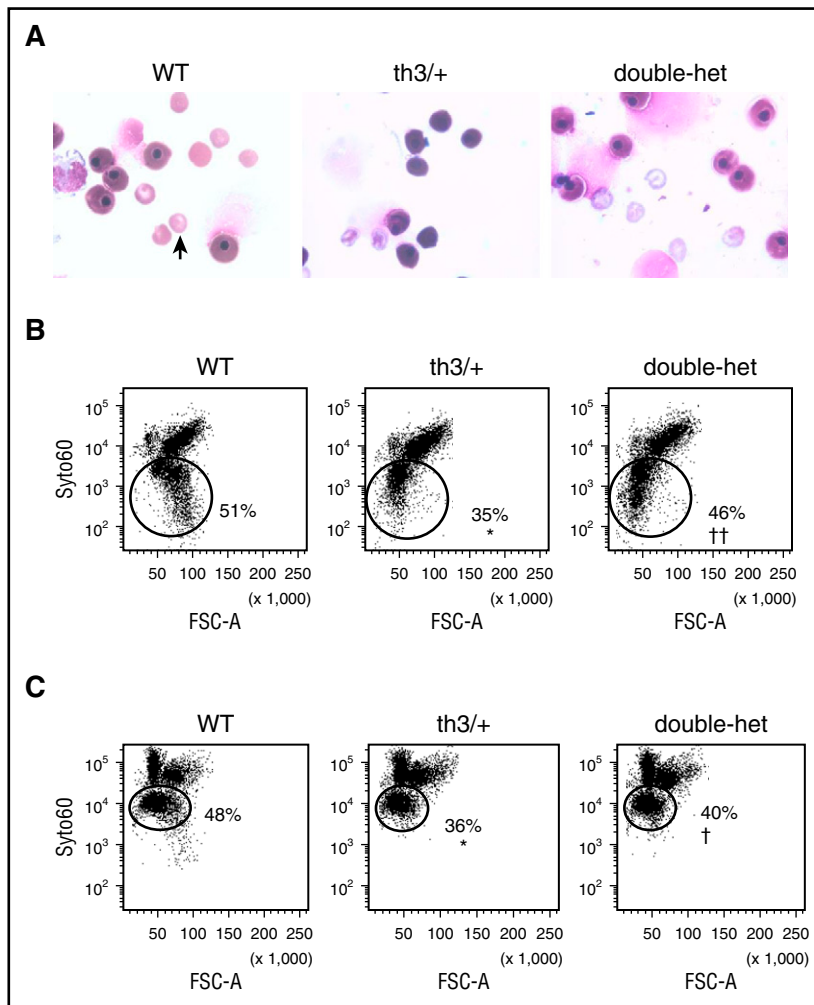
## Results

### Double-heterozygote mice exhibit improved anemia and ineffective erythropoiesis

Double-heterozygote (TfR1<sup>+/-</sup> crossed with th3/+) mice exhibit increased circulating hemoglobin and RBC count and decreased reticulocyte count and red cell distribution width (RDW) in relation to th3/+ mice (Table 1). In addition, MCV and mean corpuscular hemoglobin (MCH) in double-heterozygote mice are further decreased, indicating relatively iron-restricted erythropoiesis (Table 1). Double-heterozygote mice also reveal improved RBC morphology (Figure 1A), decreased  $\alpha$ -globin precipitation on RBC membranes (Figure 1B), and normalized circulating RBC survival in comparison with th3/+ mice (Figure 1C). Spleen size is significantly reduced (Figure 1D-E) with largely normalized splenic architecture (Figure 1F), decreased proportion of erythroid precursors in the spleen (supplemental Figure 1A, available on the Blood Web site), reversal of extramedullary erythropoiesis in the liver (Figure 1F), and no change in splenic nonheme iron concentration (supplemental Figure 1B). Furthermore, in comparison with th3/+, the proportion of bone marrow erythroid precursors is reduced (Figure 1G). No differences in bone marrow erythroid precursor apoptosis or reactive oxygen species are observed between double-heterozygote and th3/+ mice (supplemental Figure 1C-D). Lastly, double-heterozygote mice exhibit decreased serum erythropoietin concentration in relation to th3/+ mice (Figure 1H), although erythropoietin concentration remains somewhat higher than in WT mice (*P* = .06). These findings demonstrate improved ineffective erythropoiesis in double-heterozygote mice, with a significantly increased proportion of enucleated erythroblasts (Figure 1G).

**Figure 1. Improved ineffective erythropoiesis in double-heterozygote mice.** (A) Morphology of RBCs in peripheral blood smears (*n* = 5 mice per group). (B) Deposition of  $\alpha$ -globin on RBC membranes as assessed by analyzing proteins derived from RBC membranes using nondenaturing gel analysis. Data are representative of an experiment independently repeated five times. Standard "localization control," RBC cytoplasmic lysate was run on the gel to identify where  $\alpha$ - and  $\beta$ -globin migrate. (C) RBC survival in circulation from WT, TfR1<sup>+/-</sup>, th3/+, and double-heterozygote mice as measured by the decaying percentage of biotinylated RBCs over time (*n* = 4 mice per group). (D) Double-heterozygote mice exhibit smaller spleen size in comparison with th3/+ mice. (E) Statistical analysis of spleen/body weight (*n* = 5-6 mice per group). (F) Ter119 immunohistochemistry staining reveals more normal splenic architecture with more surface area devoted to white pulp (Ter119 negative cells) in TfR1<sup>+/-</sup> mice in relation to WT mice and in double-heterozygote mice in relation to th3/+ mice. In addition, Ter119 immunohistochemistry staining of liver sections reveals reversal of extramedullary erythropoiesis (circles) in double-heterozygote mice in relation to th3/+ mice (*n* = 4-6 mice per group). (G) Flow cytometry analysis of percentages of bone marrow erythroid precursors (red) and enucleated cells (black) from WT, TfR1<sup>+/-</sup>, th3/+, and double-heterozygote mice as identified by CD44 and forward scatter<sup>46,52</sup> (*n* = 4-5 mice per group). (H) Serum erythropoietin concentration in WT, TfR1<sup>+/-</sup>, th3/+, and double-heterozygote mice (*n* = 4-5 mice per group). \**P* < .05 vs WT mice; \*\**P* < .01 vs WT mice; ††*P* < .01 vs th3/+ mice. Double-het = double-heterozygote mice; FSC, forward scatter; NS, not significant; STD, standard.





**Figure 2. Increased enucleation in vivo and in vitro in double-heterozygote fetal liver cells.** (A) Peripheral smears with nucleated and enucleated (arrow) erythrocytes from WT, th3/+, and double-heterozygote E14.5 embryos. (B) Flow cytometry analysis of nucleated and enucleated (circles; SYTO ×60 low cells<sup>53,54</sup>) E18.5 fetal liver cells in vivo. (C) Flow cytometry analysis of nucleated and enucleated (circles; SYTO ×60 low cells<sup>53,54</sup>) E12.5 to E14.5 WT, th3/+, and double-heterozygote fetal liver cells in vitro (n = 3–5 mice per group). \**P* < .05 vs WT mice; †*P* < .05 vs th3/+ mice; ††*P* < .01 vs th3/+ mice.

### Increased enucleation in double-heterozygote mice

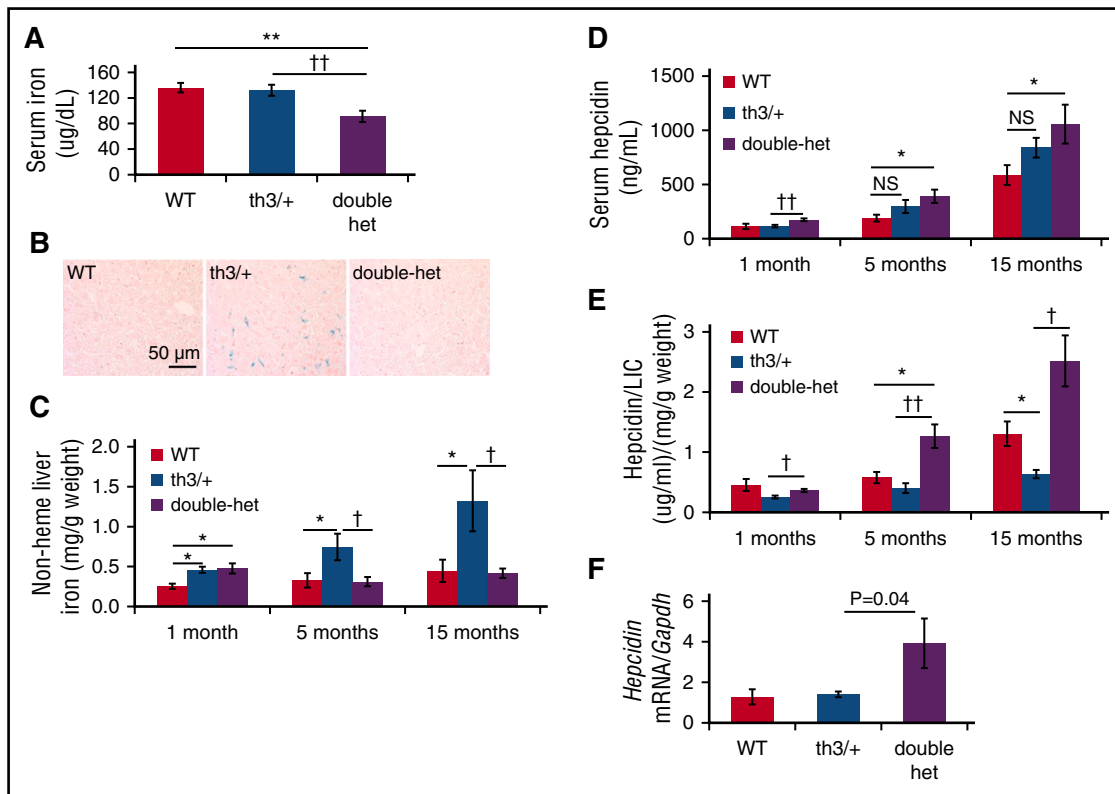
Erythroid precursor enucleation results in the formation of reticulocytes and extruded nuclei surrounded by a rim of membrane (ie, pyrenocyte). To explore the possibility that TfR1 haploinsufficiency influences enucleation, we evaluated E14.5 embryos at the start of enucleation and demonstrated that th3/+ embryos display fewer enucleated cells in peripheral circulation in relation to WT, partially restored in double-heterozygote embryos (Figure 2A). We also analyze enucleation in vivo in th3/+ E18.5 FLCs.<sup>58</sup> Enucleation is decreased in th3/+ in relation to WT and normalized in double-heterozygote FLCs (Figure 2B). Furthermore, enucleation of E12.5 to 14.5 th3/+ FLCs (when the majority of FLCs remain nucleated) after 24 hours in vitro<sup>49</sup> is significantly decreased (Figure 2C) and partially restored in double-heterozygote FLCs (Figure 2C), suggesting that decreased TfR1 expression restores delayed erythroid enucleation. Our data support the hypothesis that, in light of in vivo and in vitro effects, improved enucleation is evidence of improved ineffective erythropoiesis in  $\beta$ -thalassemic mice as a consequence of TfR1 haploinsufficiency.

### Systemic iron restriction, increased hepcidin, and decreased erythroferrone in double-heterozygote mice

Because erythropoiesis results in hepcidin suppression and increased hepcidin decreases circulating iron concentration, we hypothesized that improved erythropoiesis in double-heterozygote mice results in

hepcidin derepression and consequently relative systemic iron restriction. Consistent with this expectation, double-heterozygote mice exhibit decreased serum iron (Figure 3A), transferrin iron-binding capacity (supplemental Figure 2A), and transferrin concentration (supplemental Figure 2B) in relation to th3/+ mice as well as transferrin saturation (supplemental Figure 2C) in relation to WT mice. Transferrin saturation is a calculated value; if both serum iron and transferrin iron-binding capacity are decreased, as they are in double-heterozygote mice in relation to th3/+ mice, then transferrin saturation remains unchanged. Furthermore, stainable iron in liver sections (Figure 3B) and nonheme liver iron concentration (Figure 3C) decrease in double-heterozygote mice in relation to th3/+ mice, consistent with the reversal of iron overload over time. Despite this, serum hepcidin is increased in double-heterozygote mice in relation to WT mice (Figure 3D).

Prior studies demonstrate that hepcidin expression increases as body iron stores increase in th3/+ mice.<sup>5,26</sup> We thus evaluated 1-, 5-, and 15-month-old mice. First, we demonstrate statistically increased hepcidin concentration in double-heterozygote mice in relation to th3/+ mice at 1 month of age (Figure 3D). Increased liver iron accumulates in th3/+ mice as they age (Figure 3C), resulting in insufficiently increased hepcidin and insensitivity to iron as measured by hepcidin/liver iron concentration in 15-month-old th3/+ mice (Figure 3E). Second, serum hepcidin concentration increases progressively in double-heterozygote mice with statistically significant differences in relation to WT mice (Figure 3D); no difference exists between WT and th3/+ mice at 1, 5, and



**Figure 3. Increased hepcidin despite relative iron restriction in double-heterozygote mice.** (A) Serum iron concentration (n = 4-6 mice per group) and (B) Prussian blue staining of liver samples (n = 3-4 mice per group) in WT, th3/+, and double-heterozygote mice. Nonheme liver iron (C), serum hepcidin (D), and hepcidin/liver iron (E) concentrations in 1-month-old mice (n = 3-4 per group), 5-month-old mice (n = 4-8 per group), and 15-month-old mice (n = 3-4 per group) in WT, th3/+, double-heterozygote mice. (F) *Hepcidin* mRNA in WT hepatocytes exposed in vitro to sera from WT, th3/+, and double-heterozygote mice (n = 5-7 mice per group). \* $P < .05$ ; \*\* $P < .01$  vs WT mice; † $P < .05$ ; †† $P < .01$  vs th3/+ mice. LIC, liver iron concentration.

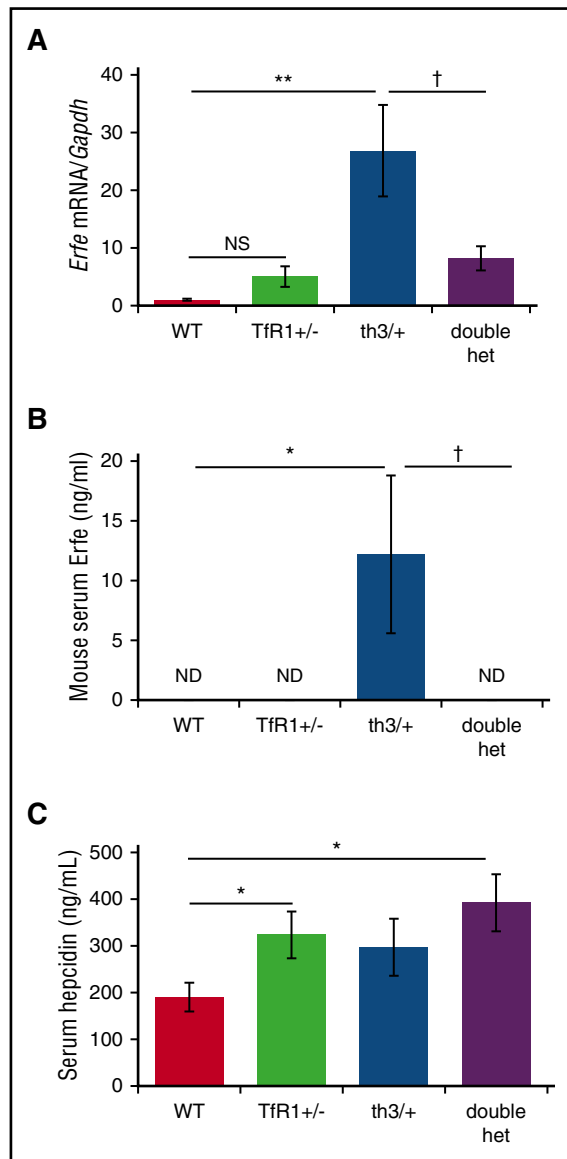
15 months. Consequently, unlike those in th3/+ mice, iron stores do not increase in double-heterozygote mice as they age (Figure 3C), suggesting both that increased hepcidin prevents progressive iron accumulation and that hepcidin regulation is independent of systemic iron in double-heterozygote mice. Lastly, the effect of Tfr1 haploinsufficiency on hematologic parameters is sustained in 15-month-old th3/+ mice (Table 2), further suggesting that progressive increase in serum hepcidin concentration is independent of systemic iron (Figure 3E).

To further evaluate whether increased hepcidin is a consequence of a circulating factor, we treated WT hepatocytes in vitro with serum from WT, th3/+, and double-heterozygote mice. *Hepcidin* mRNA expression was significantly increased in response to serum from double-heterozygote mice in relation to th3/+ mice (Figure 3F). Because erythroferrone suppresses hepcidin in th3/+ mice,<sup>25</sup> we postulate that increased hepcidin resulted from decreased erythroferrone in double-heterozygote mice. Our data demonstrate that *erythroferrone* mRNA expression and serum concentration are increased in th3/+ mice in comparison with WT mice, but significantly reduced (Figure 4A) and undetectable (Figure 4B) in double-heterozygote mice. Because erythroferrone functions as a hormone,<sup>25</sup> we emphasize the importance of serum erythroferrone concentration rather than its mRNA expression. Furthermore, when analyzed concurrently with serum hepcidin concentration, increased hepcidin in Tfr1<sup>+/-</sup> mice in relation to WT mice does not reflect changes in erythroferrone, and decreased erythroferrone in double-heterozygote mice in relation to th3/+ mice does not result in significantly increased hepcidin concentration (Figure 4C). Lastly, no difference in GDF-15 mRNA expression is observed in double-heterozygote erythroblasts in relation to th3/+ erythroblasts (supplemental Figure 3).

Furthermore, because serum iron is decreased in double-heterozygote mice in relation to WT mice (Figure 3A) with significantly decreased spleen size, serum erythropoietin, and erythroferrone expression (Figures 1D-E,H, 4A-B), we anticipated that the dominant iron signal would decrease hepcidin expression in double-heterozygote mice. We thus propose that counterintuitively increased hepcidin in double-heterozygote mice in comparison with th3/+ mice (Figure 3D-E) is a consequence of Tfr1 haploinsufficiency or other yet unknown (nonerythroferrone related) erythroid regulators of hepcidin.

#### No change in hepatocyte Tfr2 and Hfe expression or BMP/Smad and Mek/Erk signaling in double-heterozygote mice

Because our analysis of double-heterozygote mice indicates a potential novel mechanism of hepcidin regulation by the erythron and erythroid regulation of hepcidin is incompletely understood, we interrogate known iron-related signaling pathways, through cell surface Tfr2, Hfe, and BMP receptor via BMP/Smad or Mek/Erk signaling pathways, in hepatocytes.<sup>59-62</sup> Tfr2 and Hfe increase hepcidin expression in response to systemic iron<sup>59,60</sup> through parallel pathways involving Mek/Erk1/2 and Smad1/5/8.<sup>63</sup> *Hfe* and *Tfr2* mRNA expression (supplemental Figure 4A) and Tfr2 protein concentration (supplemental Figure 4B-C) are no different in isolate hepatocytes from WT, Tfr1<sup>+/-</sup>, th3/+, and double-heterozygote mice. Furthermore, signaling through Mek/Erk (supplemental Figure 4B,D) and Smad pathways (supplemental Figure 4E-F) are unchanged in double-heterozygote hepatocytes in comparison with th3/+ hepatocytes. Lastly, no changes in *BMP2* mRNA expression (supplemental Figure 5A) and protein concentration (supplemental Figure 5B-C)



**Figure 4. Significantly decreased erythroferrone in double-heterozygote mice.** (A) *Erythroferrone* mRNA expression in erythroid-enriched bone marrow from WT, TfR1<sup>+/-</sup>, th3/+, and double-heterozygote mice (n = 3–6 mice per group). Concurrently assessed serum erythroferrone (B) and hepcidin (C) concentrations in WT, TfR1<sup>+/-</sup>, th3/+, and double-heterozygote mice (n = 5–6 mice per group). \**P* < .05; \*\**P* < .01 vs WT mice; †*P* < .05 vs th3/+ mice. ND, not detected.

or *Bmp6* expression in relation to liver iron concentration (supplemental Figure 5D) are evident in isolate hepatocytes from double-heterozygote mice in relation to th3/+ mice. These findings suggest that TfR1 haploinsufficiency regulates hepcidin independently of BMP/Smad and Mek/Erk signaling pathways and *TfR2* or *Hfe* expression in th3/+ mice.

### Double-heterozygote mice exhibit iron-restricted erythropoiesis and shift of iron contents between bone marrow cell populations

We have previously shown that nonheme iron is decreased in th1/th1 mice bone marrow despite systemic iron overload.<sup>64</sup> As our current data reveal, this is also true of th3/+ mice, and nonheme iron remains unchanged in double-heterozygote mice in comparison with th3/+ mice (Figure 5A). We hypothesized that TfR1 haploinsufficiency results in disproportionately decreased iron uptake by erythroid precursors. To test this, we separated bone marrow samples into CD45-negative cells, an erythroid-enriched population,<sup>46</sup> and nonerythroid (CD45-positive) cells. Our results demonstrate that TfR1<sup>+/-</sup> and th3/+ erythroid precursors have less nonheme iron than do WT (Figure 5B–C), and double-heterozygote erythroid precursors exhibit a further decrease in nonheme iron in relation to th3/+ (Figure 5C). Furthermore, in comparison with WT mice, th3/+ mice exhibit decreased bone marrow and erythroid precursor nonheme iron (Figure 5A–C), the latter normalized in double-heterozygote mice (Figure 5C). Lastly, we demonstrate that although nonheme iron concentration is further decreased in double-heterozygote erythroid precursors, it is increased in CD45-positive cells (Figure 5C). Our data strongly suggest that TfR1 haploinsufficiency disproportionately influences erythroid precursor iron concentration, redistributing iron from erythroid precursors to other cell types (eg, macrophages) within the bone marrow. In light of these results, we hypothesized that apotransferrin improves erythropoiesis in  $\beta$ -thalassemic mice<sup>42,43</sup> by downregulating erythroid precursor TfR1 expression.

### Apotransferrin enhances loss of reticulocyte TfR1 during enucleation, improves enucleation, and reduces TfR1 expression in $\beta$ -thalassemic erythroid precursors independently of signaling via erythropoietin

Similar to TfR1 haploinsufficiency, exogenous apoTf reverses ineffective erythropoiesis in  $\beta$ -thalassemic mice.<sup>42,43,45</sup> In vivo, both TfR1 mRNA and protein expression in erythroid precursors are significantly increased in th3/+ mice in comparison with WT mice (Figure 6A–B; supplemental Figure 6A). Furthermore, because TfR1 is regulated by iron status via the binding of Irp2 at the 3' transcript, leading to *TfR1* mRNA stabilization and increased translation during iron deficiency, we expected apoTf-induced iron-restricted erythropoiesis to further increase *TfR1* expression.<sup>65</sup> Despite this, exogenous apoTf reduced erythroid precursor TfR1 concentration without changing mRNA expression (Figure 6A–B; supplemental Figure 6A). We thus postulated that decreased erythroid precursor *TfR1* expression in apoTf-treated  $\beta$ -thalassemic mice is a consequence of decreased erythropoietin (Figure 1H) and Stat5 signaling, known to transcriptionally regulate TfR1.<sup>35,66</sup> To test this, we evaluate in vitro apoTf-treated FLCs and demonstrate decreased TfR1 mRNA and protein concentration without changes in Stat5 signaling or Irp-2 concentration (Figure 6C–D; supplemental Figure 6B–D), suggesting that apoTf has a direct effect on decreasing *TfR1* expression in erythroid precursors.

**Table 2. RBC parameters in 15-month-old double-heterozygote mice reveal a significant increase in RBC number and hemoglobin with a decrease in reticulocyte count and RDW in comparison with th3/+ mice**

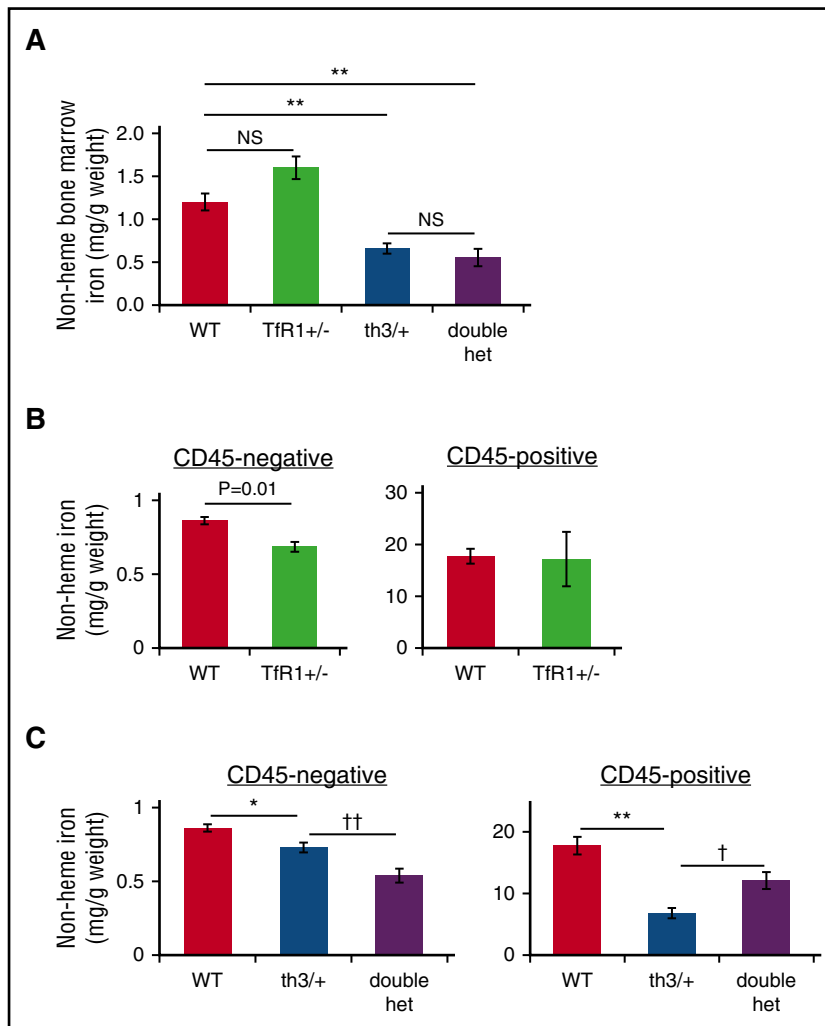
	Hemoglobin (g/dL)	RBCs (10 <sup>6</sup> cells/ $\mu$ L)	Reticulocytes (10 <sup>9</sup> cells/L)	RDW (%)	MCV (fL)	MCH (pg)
th3/+	7 $\pm$ 0.3	8 $\pm$ 0.2	1544 $\pm$ 64	36 $\pm$ 0.2	38 $\pm$ 1.4	8 $\pm$ 0.1
Double-het	10 $\pm$ 0.3***	12 $\pm$ 0.4***	965 $\pm$ 113***	27 $\pm$ 1.9**	35 $\pm$ 0.4	8 $\pm$ 0.1

Data represent means  $\pm$  standard errors of the mean; n = 3–4 mice per group.

Double-het, double-heterozygote mice.

\*\**P* < .01; \*\*\**P* < .001 vs th3/+ mice.

**Figure 5. Changes in bone marrow iron distribution associated with TfR1 haploinsufficiency.** (A) Bone marrow nonheme iron concentration in WT, TfR1<sup>+/-</sup>, th3<sup>+/+</sup>, and double-heterozygote mice (n = 4-6 mice per group). Bone marrow CD45 negative cells (erythroid precursor enriched population) in WT and TfR1<sup>+/-</sup> mice (n = 4-6 mice per group) (B) as well as th3<sup>+/+</sup> and double-heterozygote mice (n = 4-6 mice per group) (C). \**P* < .05; \*\**P* < .01 vs WT mice; †*P* < .05; ††*P* < .01 vs th3<sup>+/+</sup> mice.



To explore the possibility that apoTf decreases partitioning of TfR1 to reticulocytes during enucleation, we evaluated the effect of apoTf on E12.5 to E14.5 FLCs in vitro. Our data demonstrate that the ratio of membrane TfR1 on extruded nuclei and reticulocytes is significantly increased in apoTf-treated th3<sup>+/+</sup> FLCs (Figure 6E). Furthermore, our results demonstrate increased enucleation in apoTf-treated E12.5 th3<sup>+/+</sup> FLCs (Figure 6F). Taken together, these results provide evidence that exogenous apoTf alters TfR1 expression, is associated with decreased partitioning of TfR1 to reticulocytes, and correlates with improved enucleation of th3<sup>+/+</sup> erythroid precursors.

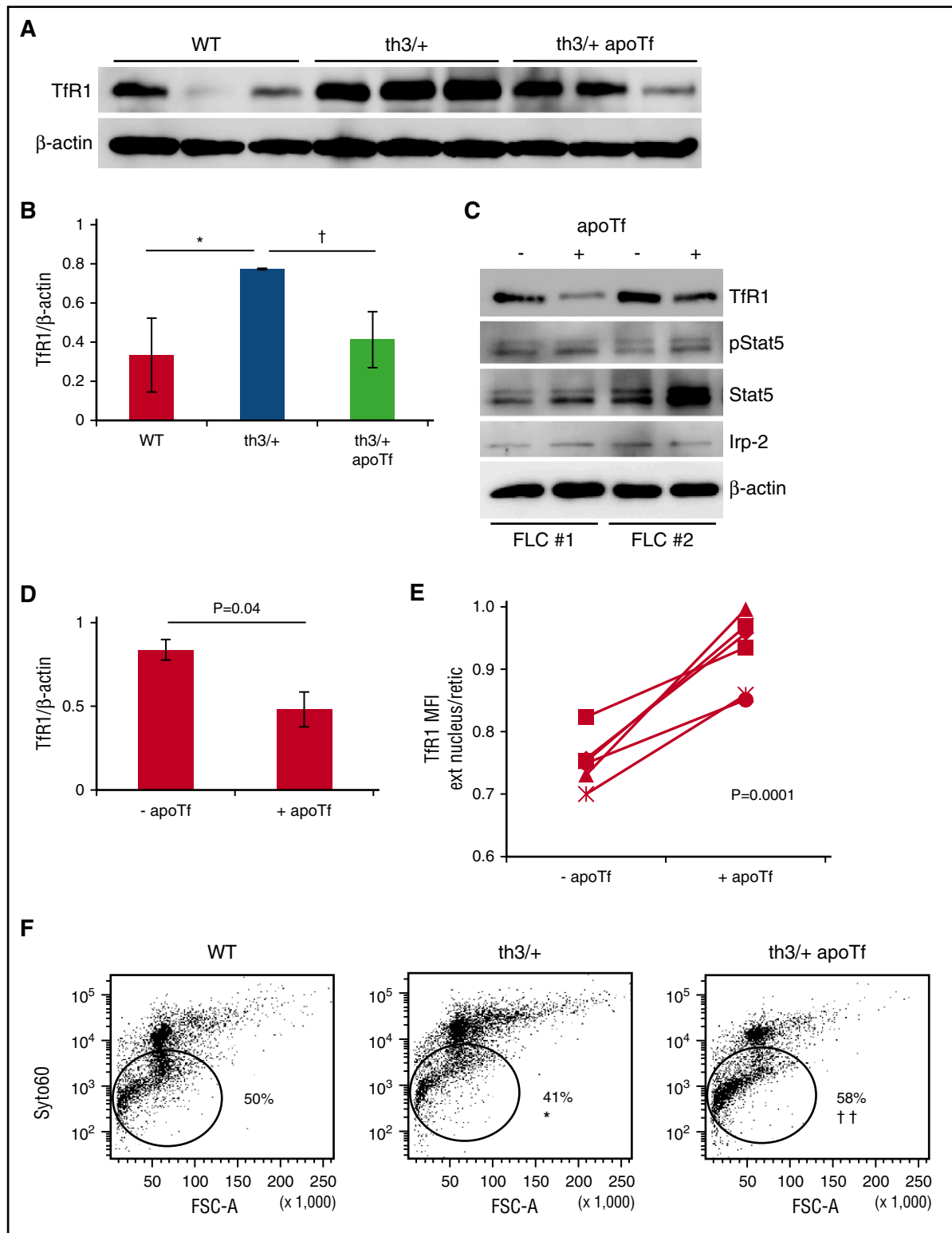
## Discussion

Because transferrin-bound iron uptake via TfR1 is the major source of iron for erythropoiesis, we hypothesized that exogenous apoTf operates by decreasing TfR1 in erythroid precursors to compensate for ineffective erythropoiesis in  $\beta$ -thalassemic mice. We developed a mouse model with TfR1 haploinsufficiency in  $\beta$ -thalassemic mice and demonstrate that these double-heterozygote mice alleviate anemia by reversing ineffective erythropoiesis and promoting enucleation. Furthermore, TfR1 haploinsufficiency derepresses hepcidin, resulting in reversal of iron overload, redistributing iron from erythroid precursors to bone marrow CD45-positive cells (ie, macrophages). Lastly, we demonstrate that apoTf decreases TfR1 partitioning to

reticulocytes during enucleation, improving erythroid enucleation, and suppresses TfR1 in  $\beta$ -thalassemic FLCs independently of erythropoietin, Stat5 signaling, and regulation by Irf-2. Taken together, our results suggest that decreased TfR1 expression during erythroid differentiation is a novel potential target to ameliorate ineffective erythropoiesis, derepress hepcidin, and reverse iron overload in  $\beta$ -thalassemia.

We inadvertently examined the effects of decreasing *TfR1* expression in apoTf-treated  $\beta$ -thalassemic mice<sup>42,45</sup> with reversal of ineffective erythropoiesis.<sup>42</sup> We anticipate that iron-restricted erythropoiesis is a central underlying mechanism for these observations. Accordingly, we demonstrate decreased transferrin saturation, MCV, and MCH in apoTf-treated  $\beta$ -thalassemic mice<sup>42,45</sup> and decreased cellular iron and heme concentrations in apoTf-treated mouse erythroleukemia (MEL) cells (supplemental Figure 7). Why cellular iron concentration is decreased in th3<sup>+/+</sup> precursors in relation to WT erythroid precursors remains incompletely understood, but we hypothesize that the increased number of  $\beta$ -thalassemic erythroid precursors limit iron availability per cell and, in conjunction with increased serum erythropoietin concentration, result in increased *TfR1* expression in vivo. The effects of transferrin treatment and TfR1 haploinsufficiency on  $\beta$ -thalassemic mice thus provide evidence of an additional mechanism for increasing hepcidin by erythroid regulation, not a direct effect of hepcidin expression that results in iron restriction and improves erythropoiesis as a secondary effect.<sup>38,40,41</sup>



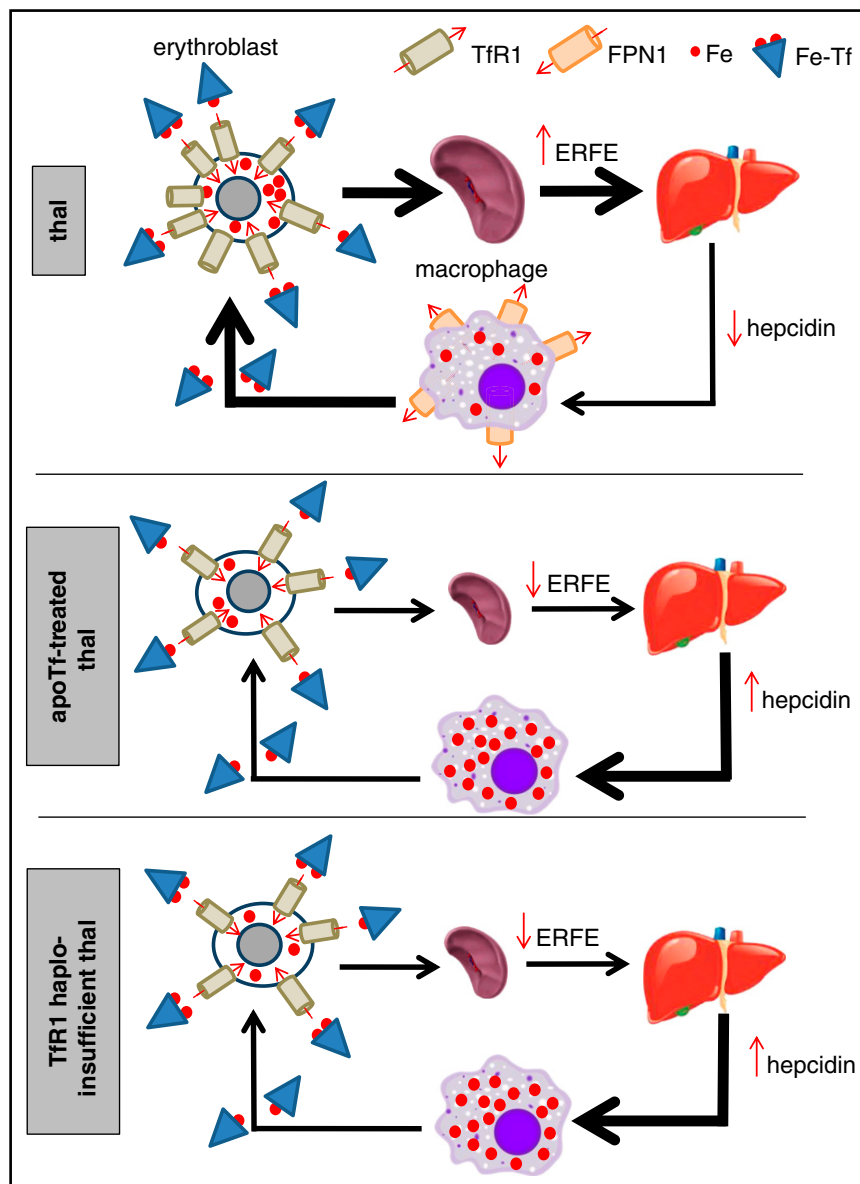


**Figure 6. Apotransferrin decreases TfR1 and enhances enucleation in β-thalassemic erythroid precursors.** (A) Protein concentration for TfR1 in CD45 negative bone marrow cells from WT, th3/+, and apotransferrin treated th3/+ mice. (B) Statistical analysis of TfR1/β-actin (n = 4-5 mice per group). (C) Protein expression of TfR1, pStat5, Stat5, Irf-2, and β-actin in fetal liver cells treated with apotransferrin in vitro (experiment repeated twice). (D) Statistical analysis of TfR1/β-actin in fetal liver cells treated with apoTf in vitro. (E) Proportion of TfR1 on extruded nuclei in relation to reticulocytes during in vitro enucleation of th3/+ fetal liver cells with and without additional apotransferrin (n = 6 pups per group). (F) Erythroid enucleation in WT, th3/+, and apotransferrin-treated th3/+ fetal liver cells (n = 3-4 pups per group). \*P < .05; \*\*P < .01 vs WT mice; †P < .05; ††P < .01 vs th3/+ mice. Ext nucleus, extruded nucleus; retic, reticulocyte; MFI, mean fluorescence index.

In addition, we surmise that due to excess TfR1 in β-thalassemic precursors in relation to WT erythroid precursors, TfR1 haploinsufficiency induces further iron-restricted erythropoiesis in β-thalassemic

mice. We hypothesize that both exogenous apoTf and TfR1 haploinsufficiency result in decreased α-globin production and precipitation on RBC membranes,<sup>42</sup> enabling heat shock protein 70

**Figure 7. Proposed working model of iron-restricted erythropoiesis in apotransferrin-treated and TfR1 haploinsufficient  $\beta$ -thalassemic mice.** Both TfR1 haploinsufficiency and exogenous apoTf result in decreased cellular iron in erythroid precursors, leading to decreased splenomegaly and ineffective erythropoiesis, which in turn causes decreased erythroferrone and hepcidin derepression. Increased hepcidin provides positive feedback to sustain iron-restricted erythropoiesis by preventing increased iron absorption and locking recycled iron within macrophages. ERFE, erythroferrone; Fe, iron; Fe-Tf, transferrin-bound iron; FPN1, ferroportin 1; thal,  $\beta$ -thalassemia.



translocation into the nucleus to prevent GATA-1 cleavage by caspase-3,<sup>67</sup> and restore terminal erythropoiesis in  $\beta$ -thalassemic mice. Consequently, double-heterozygote mice and apoTf-treated  $\beta$ -thalassemic<sup>42,43</sup> mice exhibit decreased splenomegaly and erythroferrone, the latter derepressing hepcidin and preventing reversal of iron-restricted erythropoiesis by inhibiting iron absorption and sequestering iron in macrophages (Figure 7). We postulate that improved RBC survival in double-heterozygote mice results from decreased splenomegaly (Figure 1D-E) as in apoTf-treated in  $\beta$ -thalassemic mice.<sup>42</sup> In  $\beta$ -thalassemia, the enlarged spleen is the site for extramedullary erythropoiesis, serving as a reservoir for erythroid precursors that cannot undergo apoptosis (due to elevated erythropoietin concentration) or differentiation (due to ineffective erythropoiesis). Both exogenous apotransferrin and TfR1 haploinsufficiency decrease extramedullary erythropoiesis, and thus splenomegaly, which in turn results in decreased serum erythropoietin concentrations. Additional experiments are required to fully elucidate this effect.

Although iron restriction by multiple means has been assessed previously, neither iron-restricted diet nor iron chelation reverse ineffective erythropoiesis in  $\beta$ -thalassemic mice despite a measurable

decrease in liver iron overload. Several interpretations are possible. First, iron-deficient diet leads to transient iron-restricted erythropoiesis; however, because hepcidin is suppressed,<sup>38,68</sup> the effect on erythropoiesis is not as robust as other means of inducing iron-restricted erythropoiesis. In addition, systemic iron deficiency results in TfR1 upregulation, counteracting iron-restricted erythropoiesis by increasing iron uptake in erythroid precursors.<sup>69,70</sup> Iron chelation, on the other hand, causes increased hepcidin expression,<sup>39,68</sup> changing the distribution of iron by moving it out of parenchymal cells and loading it onto circulation transferrin. Why it has no effect on erythropoiesis is unclear, but several possibilities exist. First, lack of effect on erythropoiesis may be a consequence of the dose used. Also, hepcidin may be insufficiently increased, or increased hepcidin may take time to enable an observable iron-restricted erythropoiesis; however, as systemic iron overload decreases, hepcidin expression is also likely to decrease, enhancing iron absorption and recycling. Our models predict that iron-restricted erythropoiesis as a consequence of exogenous apotransferrin or TfR1 haploinsufficiency with increased hepcidin expression is essential to ameliorate ineffective erythropoiesis in  $\beta$ -thalassemia (Figure 7).

Induction of TfR1 expression during erythroid differentiation is incompletely understood. Although iron is known to negatively modulate TfR1 expression in nonerythroid cells,<sup>69,71,72</sup> iron concentration in hemoglobin-synthesizing cells only mildly alters TfR1 expression.<sup>70</sup> More recent data demonstrate that Stat5 signaling is required for expression of Irp-2, itself the major TfR1 transcriptional regulator in erythroid precursors.<sup>66</sup> Thus, erythroid precursor TfR1 expression is decreased in apoTf-treated  $\beta$ -thalassemic mice because iron-restricted erythropoiesis reverses ineffective erythropoiesis and provides feedback to decrease erythropoietin. Consequently, decreased erythropoietin results in decreased Stat5 signaling and TfR1 expression,<sup>66</sup> providing a rationale for decreased TfR1 expression in apoTf-treated mice; however, apoTf added in vitro also results in decreased TfR1 expression in  $\beta$ -thalassemic erythroid precursors, in the absence of changes in erythropoietin, Stat5 signaling, and Irp-2 expression, suggesting that apoTf directly influences TfR1 expression, independent of these factors. Taken together, the current study demonstrates the central regulatory role of TfR1 in iron-loading anemias. Although additional experiments are required to fully elucidate this complicated set of interactions and their effects on enucleation, we anticipate that exogenous apotransferrin and TfR1 haploinsufficiency significantly improve erythroid differentiation, most clearly visible in the proportion of enucleated erythroblasts. In other words, because  $\beta$ -thalassemic mice exhibit expanded erythropoiesis, improved erythroid differentiation could result in a larger proportion of enucleating erythroblasts than even in WT mice. Although TfR1 haploinsufficiency is decreased systemically in double-heterozygote mice, the disproportionately high concentration of TfR1 on erythroblasts (in relation to other cell types) causes their particular vulnerability in the haploinsufficient condition, strongly suggesting that the observed effects are a consequence of haploinsufficient TfR1, specifically in erythroid precursors.

With the discovery of erythroferrone, hepcidin regulation by erythropoiesis has recently received renewed attention.<sup>25,26</sup> In light of the systemic iron restriction without decrease in erythroferrone, we propose that increased hepcidin in TfR1<sup>+/-</sup> mice cannot be explained without postulating an alternative hypothesis for hepcidin regulation.<sup>37</sup> This prior evaluation in hematopoiesis-specific TfR1 haploinsufficient mice following bone marrow transplant further enhanced the effect on hepcidin upregulation.<sup>37</sup> We anticipate equivalent results using double-heterozygote bone marrow as a source of hematopoietic cells.

Patients with  $\beta$ -thalassemia exhibit varying degrees of ineffective erythropoiesis and iron overload. Recently, expanded knowledge of disease modifiers has focused attention on manipulating mechanisms to reverse ineffective erythropoiesis. Several sources suggest that increasing hepcidin concentration is key to improving disease severity; however, the appropriate hepcidin concentration is individualized, and an excessive increase results in iron deficiency, preventing complete reversal of ineffective erythropoiesis. We set out to explore indirect means of increasing hepcidin in vivo to enable individualized self-regulation of hepcidin and demonstrate improved ineffective erythropoiesis and iron overload in  $\beta$ -thalassemic mice using multiple means of decreasing TfR1 expression. On the basis of our results in  $\beta$ -thalassemic mice, we suggest that apoTf is an important potential therapeutic alternative, most obviously for patients with  $\beta$ -thalassemia but also other diseases in which hepcidin is suppressed by expanded

erythropoiesis with upregulation of TfR1. In these circumstances, exogenous apoTf could reverse ineffective erythropoiesis by suppressing TfR1 expression to, in parallel, induce iron-restricted erythropoiesis, derepressing hepcidin, and prevent systemic iron overload. Because upregulation of TfR1 is observed in other diseases of ineffective erythropoiesis with concurrent anemia and iron overload,<sup>73</sup> we propose that TfR1 antagonists would be rational and apparent therapeutic targets, potentially useful to improve erythropoiesis and derepress hepcidin, simultaneously reducing RBC transfusion requirements and preventing/reversing iron overload. A new treatment approach would greatly benefit this patient population, for whom standard management over the last half-century has consisted of transfusion followed by chelation therapy.

## Acknowledgments

TfR1<sup>+/-</sup> mice were generously gifted by Nancy Andrews. The authors extend special thanks to Jacobi Medical Center for sample analysis; Elizabeta Nemeth, Janis Abkowitz, and Merav Socolovsky for stimulating discussions; and Tomas Ganz for unparalleled guidance and support. The authors also sincerely appreciate the efforts of Tomas Ganz and Elizabeta Nemeth in measuring serum erythroferrone concentration using a novel noncommercially available ELISA developed in their laboratories.

This work was supported by the National Institutes of Health, National Heart, Lung, and Blood Institute (HL105682) (Y.Z.G.), by the National Institutes of Health, National Institute of Diabetes and Digestive and Kidney Diseases (DK095112 to Y.Z.G., S.R., and R.F.; and DK107670 to Y.Z.G.), and by New York Blood Center funding to the Erythropoiesis Laboratory.

## Authorship

Contribution: H.L., T.C., W.B., M.F., and D.G.-S. performed experiments and analyzed results; H.C., J. Li, S.S., A.F., P. Pham, J. Liu, J.Z., and P. Ponka provided experimental support; X.A., N.M., R.E.F., S.R., and G.L. assisted with experiment design; H.L. and Y.Z.G. designed research, analyzed results, and drafted the initial version of the manuscript; and H.L., T.C., W.B., H.C., M.F., D.G.-S., J. Li, S.S., A.F., P. Pham, J. Liu, J.Z., P. Ponka, X.A., N.M., R.E.F., S.R., G.L., and Y.Z.G. edited the manuscript.

Conflict-of-interest disclosure: S.R. has restricted stocks in Merganser Biotech and is a member of the scientific advisory board of Meira GTx, Merganser Biotech, and Ionis Pharmaceuticals. R.E.F. has served on the scientific advisory board for Protagonist, a biotechnology company developing products to manipulate the hepcidin-ferroportin axis. The remaining authors declare no competing financial interests.

Correspondence: Yelena Z. Ginzburg, Division of Hematology and Medical Oncology, Icahn School of Medicine at Mount Sinai, 1 Gustave L. Levy Pl, P.O. Box 1079, New York, NY 10029; e-mail: yelena.ginzburg@mssm.edu.

## References

- Weatherall DJ. Pathophysiology of thalassaemia. *Baillieres Clin Haematol*. 1998;11(1):127-146.
- Pootrakul P, Kitcharoen K, Yansukon P, et al. The effect of erythroid hyperplasia on iron balance. *Blood*. 1988;71(4):1124-1129.
- Centis F, Tabellini L, Lucarelli G, et al. The importance of erythroid expansion in determining the extent of apoptosis in erythroid precursors in patients with beta-thalassemia major. *Blood*. 2000;96(10):3624-3629.
- Raja KB, Simpson RJ, Peters TJ. Intestinal iron absorption studies in mouse models of iron-overload. *Br J Haematol*. 1994;86(1):156-162.
- Gardenghi S, Marongiu MF, Ramos P, et al. Ineffective erythropoiesis in beta-thalassemia

- is characterized by increased iron absorption mediated by down-regulation of hepcidin and up-regulation of ferroportin. *Blood*. 2007; 109(11):5027-5035.
6. Park CH, Valore EV, Waring AJ, Ganz T. Hepcidin, a urinary antimicrobial peptide synthesized in the liver. *J Biol Chem*. 2001; 276(11):7806-7810.
  7. Krause A, Neitz S, Mägert HJ, et al. LEAP-1, a novel highly disulfide-bonded human peptide, exhibits antimicrobial activity. *FEBS Lett*. 2000; 480(2-3):147-150.
  8. Ganz T. Hepcidin—a regulator of intestinal iron absorption and iron recycling by macrophages. *Best Pract Res Clin Haematol*. 2005;18(2): 171-182.
  9. Pippard MJ, Callender ST, Warner GT, Weatherall DJ. Iron absorption and loading in beta-thalassaemia intermedia. *Lancet*. 1979; 2(8147):819-821.
  10. Adamsky K, Weizer O, Amariglio N, et al. Decreased hepcidin mRNA expression in thalassemic mice. *Br J Haematol*. 2004;124(1): 123-124.
  11. Finch C. Regulators of iron balance in humans. *Blood*. 1994;84(6):1697-1702.
  12. Kattamis A, Papassotiriou I, Palaiologou D, et al. The effects of erythropoietic activity and iron burden on hepcidin expression in patients with thalassemia major. *Haematologica*. 2006;91(6): 809-812.
  13. Vokurka M, Krijt J, Sulc K, Necas E. Hepcidin mRNA levels in mouse liver respond to inhibition of erythropoiesis. *Physiol Res*. 2006;55(6): 667-674.
  14. De Franceschi L, Daraio F, Filippini A, et al. Liver expression of hepcidin and other iron genes in two mouse models of beta-thalassemia. *Haematologica*. 2006;91(10):1336-1342.
  15. Origa R, Galanello R, Ganz T, et al. Liver iron concentrations and urinary hepcidin in beta-thalassemia. *Haematologica*. 2007;92(5): 583-588.
  16. Weizer-Stern O, Adamsky K, Amariglio N, et al. Downregulation of hepcidin and haemojuvelin expression in the hepatocyte cell-line HepG2 induced by thalassaemic sera. *Br J Haematol*. 2006;135(1):129-138.
  17. Kearney SL, Nemeth E, Neufeld EJ, et al. Urinary hepcidin in congenital chronic anemias. *Pediatr Blood Cancer*. 2007;48(1):57-63.
  18. Kemna EH, Kartikasari AE, van Tits LJ, Pickkers P, Tjalsma H, Swinkels DW. Regulation of hepcidin: insights from biochemical analyses on human serum samples. *Blood Cells Mol Dis*. 2008;40(3):339-346.
  19. Tanno T, Bhanu NV, Oneal PA, et al. High levels of GDF15 in thalassemia suppress expression of the iron regulatory protein hepcidin. *Nat Med*. 2007;13(9):1096-1101.
  20. Tanno T, Porayette P, Sripichai O, et al. Identification of TWSG1 as a second novel erythroid regulator of hepcidin expression in murine and human cells. *Blood*. 2009;114(1): 181-186.
  21. Casanovas G, Vujčić Spasic M, Casu C, et al. The murine growth differentiation factor 15 is not essential for systemic iron homeostasis in phlebotomized mice. *Haematologica*. 2013;98(3): 444-447.
  22. Tanno T, Rabel A, Lee YT, Yau YY, Leitman SF, Miller JL. Expression of growth differentiation factor 15 is not elevated in individuals with iron deficiency secondary to volunteer blood donation. *Transfusion*. 2010;50(7):1532-1535.
  23. Theurl I, Finkenstedt A, Schroll A, et al. Growth differentiation factor 15 in anaemia of chronic disease, iron deficiency anaemia and mixed type anaemia. *Br J Haematol*. 2010;148(3):449-455.
  24. Tarkun P, Mehtap O, Atesoğlu EB, Geduk A, Musul MM, Hacıhanefioğlu A. Serum hepcidin and growth differentiation factor-15 (GDF-15) levels in polycythemia vera and essential thrombocythemia. *Eur J Haematol*. 2013; 91(3):228-235.
  25. Kautz L, Jung G, Valore EV, Rivella S, Nemeth E, Ganz T. Identification of erythroferrone as an erythroid regulator of iron metabolism. *Nat Genet*. 2014;46(7):678-684.
  26. Kautz L, Jung G, Du X, et al. Erythroferrone contributes to hepcidin suppression and iron overload in a mouse model of  $\beta$ -thalassemia. *Blood*. 2015;126(17):2031-2037.
  27. Richardson DR, Ponka P. The molecular mechanisms of the metabolism and transport of iron in normal and neoplastic cells. *Biochim Biophys Acta*. 1997;1331(1):1-40.
  28. van Renswoude J, Bridges KR, Harford JB, Klausner RD. Receptor-mediated endocytosis of transferrin and the uptake of Fe in K562 cells: identification of a nonlysosomal acidic compartment. *Proc Natl Acad Sci USA*. 1982; 79(20):6186-6190.
  29. Huebers HA, Finch CA. The physiology of transferrin and transferrin receptors. *Physiol Rev*. 1987;67(2):520-582.
  30. Iacopetta BJ, Morgan EH, Yeoh GC. Transferrin receptors and iron uptake during erythroid cell development. *Biochim Biophys Acta*. 1982; 687(2):204-210.
  31. Ahn J, Johnstone RM. Origin of a soluble truncated transferrin receptor. *Blood*. 1993;81(9): 2442-2451.
  32. Pan BT, Johnstone RM. Fate of the transferrin receptor during maturation of sheep reticulocytes in vitro: selective externalization of the receptor. *Cell*. 1983;33(3):967-978.
  33. Hentze MW, Muckenthaler MU, Andrews NC. Balancing acts: molecular control of mammalian iron metabolism. *Cell*. 2004;117(3):285-297.
  34. Schranzhofer M, Schiffrer M, Cabrera JA, et al. Remodeling the regulation of iron metabolism during erythroid differentiation to ensure efficient heme biosynthesis. *Blood*. 2006;107(10): 4159-4167.
  35. Zhu BM, McLaughlin SK, Na R, et al. Hematopoietic-specific Stat5-null mice display microcytic hypochromic anemia associated with reduced transferrin receptor gene expression. *Blood*. 2008;112(5):2071-2080.
  36. Flanagan JM, Peng H, Wang L, et al. Soluble transferrin receptor-1 levels in mice do not affect iron absorption. *Acta Haematol*. 2006;116(4): 249-254.
  37. Keel SB, Doty R, Liu L, et al. Evidence that the expression of transferrin receptor 1 on erythroid marrow cells mediates hepcidin suppression in the liver. *Exp Hematol*. 2015;43(6):469-78.e6.
  38. Gardenghi S, Ramos P, Marongiu MF, et al. Hepcidin as a therapeutic tool to limit iron overload and improve anemia in  $\beta$ -thalassemic mice. *J Clin Invest*. 2010;120(12):4466-4477.
  39. Casu C, Aghajani M, Oikonomidou PR, Guo S, Monia BP, Rivella S. Combination of Tmprss6-ASO and the iron chelator deferiprone improves erythropoiesis and reduces iron overload in a mouse model of beta-thalassemia intermedia. *Haematologica*. 2016;101(1):e8-e11.
  40. Guo S, Casu C, Gardenghi S, et al. Reducing Tmprss6 ameliorates hemochromatosis and  $\beta$ -thalassemia in mice. *J Clin Invest*. 2013;123(4): 1531-1541.
  41. Nai A, Pagani A, Mandelli G, et al. Deletion of Tmprss6 attenuates the phenotype in a mouse model of  $\beta$ -thalassemia. *Blood*. 2012;119(21): 5021-5029.
  42. Li H, Rybicki AC, Suzuka SM, et al. Transferrin therapy ameliorates disease in beta-thalassemic mice. *Nat Med*. 2010;16(2):177-182.
  43. Chen H, Choesang T, Li H, et al. Increased hepcidin in transferrin-treated thalassemic mice correlates with decreased hepatocyte ERK activation. *Haematologica*. 2016;101(3):297-308.
  44. Yang B, Kirby S, Lewis J, Detloff PJ, Maeda N, Smithies O. A mouse model for beta 0-thalassemia. *Proc Natl Acad Sci USA*. 1995; 92(25):11608-11612.
  45. Gelderman MP, Baek JH, Yalamanoglu A, et al. Reversal of hemochromatosis by apotransferrin in non-transfused and transfused Hbbth3/+ (heterozygous B1/B2 globin gene deletion) mice. *Haematologica*. 2015;100(5):611-622.
  46. Liu J, Zhang J, Ginzburg Y, et al. Quantitative analysis of murine terminal erythroid differentiation in vivo: novel method to study normal and disordered erythropoiesis. *Blood*. 2013;121(8):e43-e49.
  47. Viatte L, Nicolas G, Lou DQ, et al. Chronic hepcidin induction causes hyposideremia and alters the pattern of cellular iron accumulation in hemochromatotic mice. *Blood*. 2006;107(7): 2952-2958.
  48. Levy JE, Jin O, Fujiwara Y, Kuo F, Andrews NC. Transferrin receptor is necessary for development of erythrocytes and the nervous system. *Nat Genet*. 1999;21(4):396-399.
  49. Zhang J, Socolovsky M, Gross AW, Lodish HF. Role of Ras signaling in erythroid differentiation of mouse fetal liver cells: functional analysis by a flow cytometry-based novel culture system. *Blood*. 2003;102(12):3938-3946.
  50. Lin L, Valore EV, Nemeth E, Goodnough JB, Gabayan V, Ganz T. Iron transferrin regulates hepcidin synthesis in primary hepatocyte culture through hemojuvelin and BMP2/4. *Blood*. 2007; 110(6):2182-2189.
  51. Torrance JD, Bothwell TH. In: Cook JD, ed. *Methods in Hematology*. Vol 1. New York: Churchill Livingstone; 1980:90-115.
  52. Chen K, Liu J, Heck S, Chasis JA, An X, Mohandas N. Resolving the distinct stages in erythroid differentiation based on dynamic changes in membrane protein expression during erythropoiesis. *Proc Natl Acad Sci USA*. 2009; 106(41):17413-17418.
  53. Konstantinidis DG, Pushkaran S, Johnson JF, et al. Signaling and cytoskeletal requirements in erythroblast enucleation. *Blood*. 2012;119(25): 6118-6127.
  54. Becker B, Clapper J, Harkins KR, Olson JA. In situ screening assay for cell viability using a dimeric cyanine nucleic acid stain. *Anal Biochem*. 1994;221(1):78-84.
  55. Dussiot M, Maciel TT, Fricot A, et al. An activin receptor IIA ligand trap corrects ineffective erythropoiesis in  $\beta$ -thalassemia. *Nat Med*. 2014; 20(4):398-407.
  56. Fung E, Nemeth E. Manipulation of the hepcidin pathway for therapeutic purposes. *Haematologica*. 2013;98(11):1667-1676.
  57. Pfaffl MW. A new mathematical model for relative quantification in real-time RT-PCR. *Nucleic Acids Res*. 2001;29(9):e45.
  58. McGrath KE, Koniski AD, Malik J, Palis J. Circulation is established in a stepwise pattern in the mammalian embryo. *Blood*. 2003;101(5): 1669-1675.
  59. Gao J, Chen J, Kramer M, Tsukamoto H, Zhang AS, Enns CA. Interaction of the hereditary hemochromatosis protein HFE with transferrin receptor 2 is required for transferrin-induced



- hepcidin expression. *Cell Metab.* 2009;9(3):217-227.
60. Schmidt PJ, Toran PT, Giannetti AM, Bjorkman PJ, Andrews NC. The transferrin receptor modulates Hfe-dependent regulation of hepcidin expression. *Cell Metab.* 2008;7(3):205-214.
  61. Wang RH, Li C, Xu X, et al. A role of SMAD4 in iron metabolism through the positive regulation of hepcidin expression. *Cell Metab.* 2005;2(6):399-409.
  62. Babitt JL, Huang FW, Wrighting DM, et al. Bone morphogenetic protein signaling by hemojuvelin regulates hepcidin expression. *Nat Genet.* 2006;38(5):531-539.
  63. Wallace DF, Summerville L, Crampton EM, Frazer DM, Anderson GJ, Subramaniam VN. Combined deletion of Hfe and transferrin receptor 2 in mice leads to marked dysregulation of hepcidin and iron overload. *Hepatology.* 2009;50(6):1992-2000.
  64. Ginzburg YZ, Rybicki AC, Suzuka SM, et al. Exogenous iron increases hemoglobin in beta-thalassemic mice. *Exp Hematol.* 2009;37(2):172-183.
  65. Rouault TA. The role of iron regulatory proteins in mammalian iron homeostasis and disease. *Nat Chem Biol.* 2006;2(8):406-414.
  66. Kerenyi MA, Grebien F, Gehart H, et al. Stat5 regulates cellular iron uptake of erythroid cells via IRP-2 and TfR-1. *Blood.* 2008;112(9):3878-3888.
  67. Arlet JB, Ribeil JA, Guillem F, et al. HSP70 sequestration by free  $\alpha$ -globin promotes ineffective erythropoiesis in  $\beta$ -thalassaemia. *Nature.* 2014;514(7521):242-246.
  68. Schmidt PJ, Racie T, Westerman M, Fitzgerald K, Butler JS, Fleming MD. Combination therapy with a Tmprss6 RNAi-therapeutic and the oral iron chelator deferiprone additively diminishes secondary iron overload in a mouse model of  $\beta$ -thalassaemia intermedia. *Am J Hematol.* 2015;90(4):310-313.
  69. Müllner EW, Kühn LC. A stem-loop in the 3' untranslated region mediates iron-dependent regulation of transferrin receptor mRNA stability in the cytoplasm. *Cell.* 1988;53(5):815-825.
  70. Chan RY, Seiser C, Schulman HM, Kühn LC, Ponka P. Regulation of transferrin receptor mRNA expression. Distinct regulatory features in erythroid cells. *Eur J Biochem.* 1994;220(3):683-692.
  71. Koeller DM, Casey JL, Hentze MW, et al. A cytosolic protein binds to structural elements within the iron regulatory region of the transferrin receptor mRNA. *Proc Natl Acad Sci USA.* 1989;86(10):3574-3578.
  72. Binder R, Horowitz JA, Basilion JP, Koeller DM, Klausner RD, Harford JB. Evidence that the pathway of transferrin receptor mRNA degradation involves an endonucleolytic cleavage within the 3' UTR and does not involve poly(A) tail shortening. *EMBO J.* 1994;13(8):1969-1980.
  73. Zhang B, Donga PZ, Corral M, Sasane M, Miller JD, Pashos CL. Pharmacoeconomic considerations in treating iron overload in patients with  $\beta$ -thalassaemia, sickle cell disease and myelodysplastic syndromes in the US: a literature review. *Pharmacoeconomics.* 2011;29(6):461-474.



2017 129: 1514-1526

doi:10.1182/blood-2016-09-742387 originally published  
online February 1, 2017

## **Decreasing TfR1 expression reverses anemia and hepcidin suppression in $\beta$ -thalassemic mice**

Huihui Li, Tenzin Choesang, Weili Bao, Huiyong Chen, Maria Feola, Daniel Garcia-Santos, Jie Li, Shuming Sun, Antonia Follenzi, Petra Pham, Jing Liu, Jinghua Zhang, Prem Ponka, Xiuli An, Narla Mohandas, Robert E. Fleming, Stefano Rivella, Guiyuan Li and Yelena Z. Ginzburg

---

Updated information and services can be found at:

<http://www.bloodjournal.org/content/129/11/1514.full.html>

Articles on similar topics can be found in the following Blood collections

[Red Cells, Iron, and Erythropoiesis](#) (786 articles)

---

Information about reproducing this article in parts or in its entirety may be found online at:

[http://www.bloodjournal.org/site/misc/rights.xhtml#repub\\_requests](http://www.bloodjournal.org/site/misc/rights.xhtml#repub_requests)

Information about ordering reprints may be found online at:

<http://www.bloodjournal.org/site/misc/rights.xhtml#reprints>

Information about subscriptions and ASH membership may be found online at:

<http://www.bloodjournal.org/site/subscriptions/index.xhtml>